

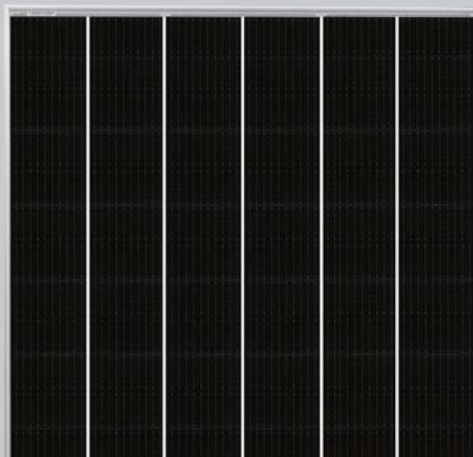
TR 78M 560-580 Watt Mono-facial

Tiling Ribbon (TR) Technology

Positive power tolerance of 0~+3%

(Draft)

TIGER Pro



KEY FEATURES



TR technology + Half Cell

TR technology with Half cell aims to eliminate the cell gap to increase module efficiency (mono-facial up to 21.21%)



MBB instead of 5BB

MBB technology decreases the distance between bus bars and finger grid line which is benefit to power increase.



Higher lifetime Power Yield

2% first year degradation,
0.55% linear degradation



Best Warranty

12 year product warranty,
25 year linear power warranty



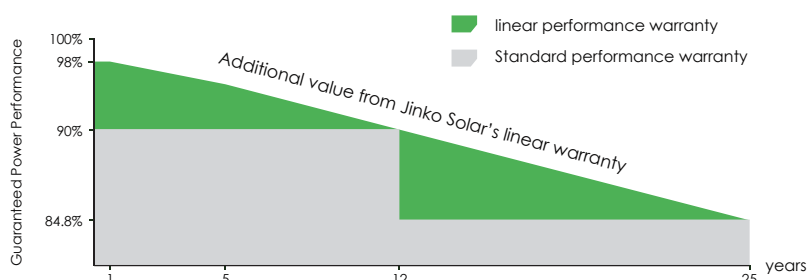
Strengthened Mechanical Support

5400 Pa snow load, 2400 Pa wind load



LINEAR PERFORMANCE WARRANTY

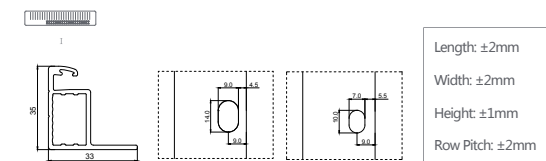
12 Year Product Warranty • 25 Year Linear Power Warranty
0.55% Annual Degradation Over 25 years



ISO9001:2015, ISO14001:2015, ISO45001:2018
certified factory

IEC61215, IEC61730 certified product

Engineering Drawings

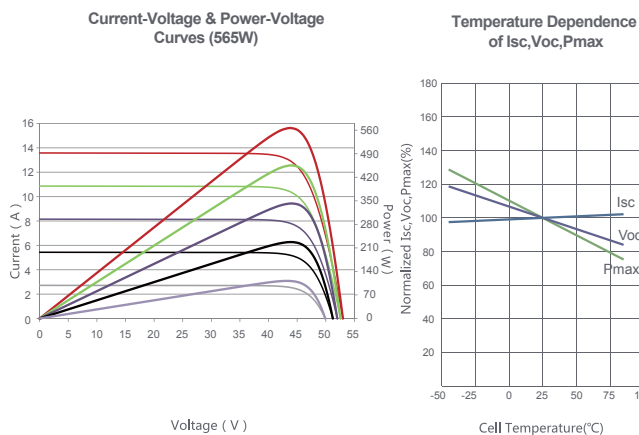


Packaging Configuration

(Two pallets = One stack)

31pcs/pallets, 62pcs/stack, 496pcs/ 40'HQ Container

Electrical Performance & Temperature Dependence



Mechanical Characteristics

Cell Type	P type Mono-crystalline
No.of cells	156 (2×78)
Dimensions	2411×1134×35mm (94.92×44.65×1.38 inch)
Weight	30.93 kg (68.2 lbs)
Front Glass	3.2mm,Anti-Reflection Coating, High Transmission, Low Iron, Tempered Glass
Frame	Anodized Aluminium Alloy
Junction Box	IP68 Rated
Output Cables	TUV 1×4.0mm² (+): 290mm , (-): 145 mm or Customized Length

SPECIFICATIONS

[illegible]

* STC:  Irradiance 1000W/m²  Cell Temperature 25°C

 AM=1.5

NOCT:  Irradiance 800W/m²  Ambient Temperature 20°C

 AM=1.5

 Wind Speed 1m/s

* Power measurement tolerance: $\pm 3\%$